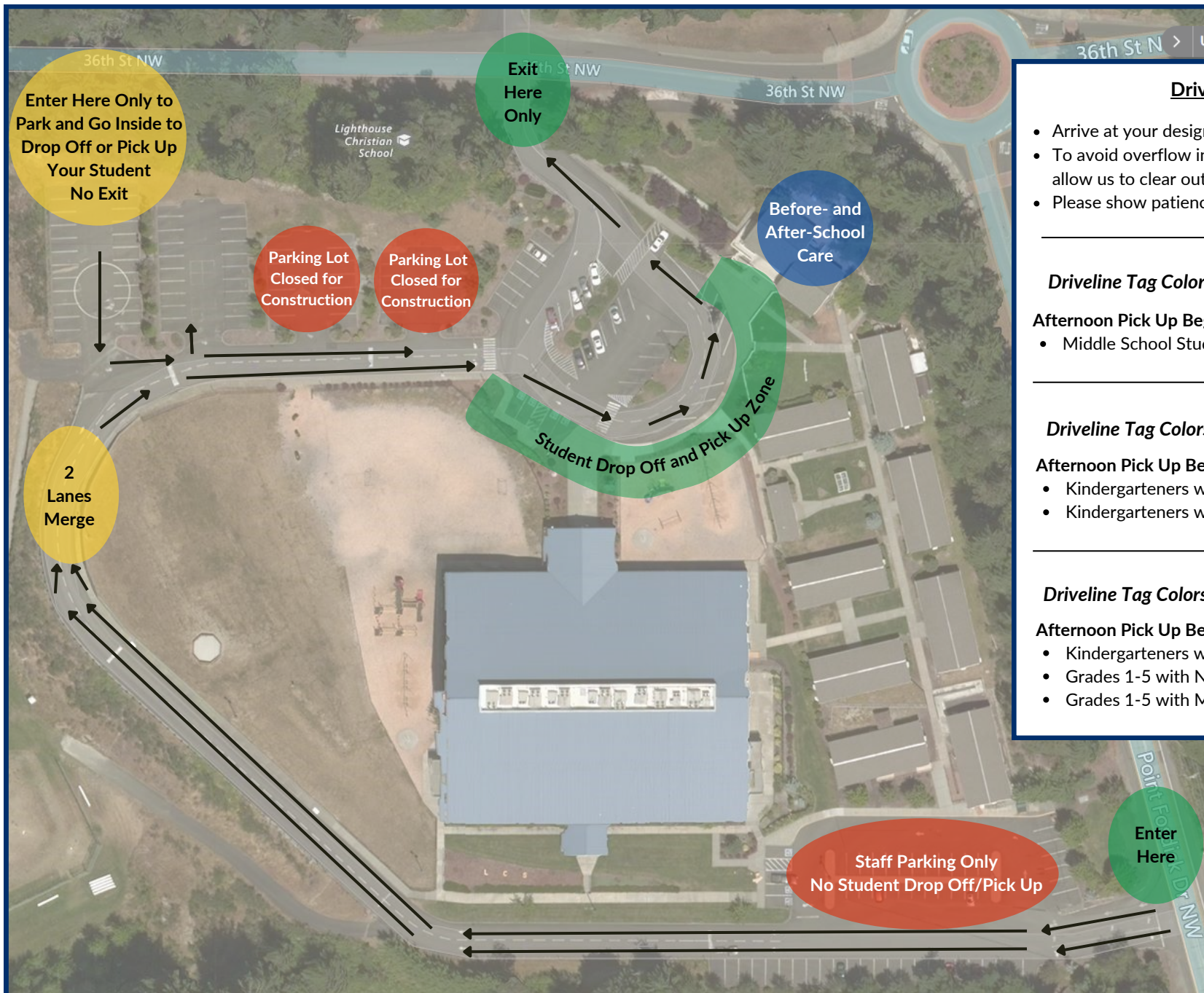




LCS Driveline Map

Please follow the routes and timelines below according to your student's grade level.



Driveline Process

- Arrive at your designated time.
- To avoid overflow into surrounding streets and to allow us to clear out earlier waves, do not arrive early.
- Please show patience and kindness during driveline.

Driveline Tag Colors:



Afternoon Pick Up Begins at 2:45 p.m.

- Middle School Students with No Elementary Siblings

Driveline Tag Colors:



Afternoon Pick Up Begins at 2:55 p.m.

- Kindergarteners with No Siblings
- Kindergarteners with Middle School Siblings

Driveline Tag Colors:



Afternoon Pick Up Begins at 3:00 p.m.

- Kindergarteners with Elementary Siblings
- Grades 1-5 with No Siblings
- Grades 1-5 with Middle School Siblings